

Visiting Buda Historic Home and Garden

Sensory guide and Social script
for the families and teachers of students that are on the Autism
Spectrum.

What is Buda?

- Buda is a house that was built in the olden days, and it used to be where the Leviny family lived for a very long time. No one lives there anymore.
- Now Buda is a place where people learn about history and enjoy visiting the house and gardens.
- The house has lots of old-fashioned objects in it, but I'm not allowed to touch them.



Arriving at Buda



- When we arrive at Buda, I will wait until the teacher says to get off the bus or wait outside the gate on the footpath if we have walked.
- We will enter through the gate at the back of the house.

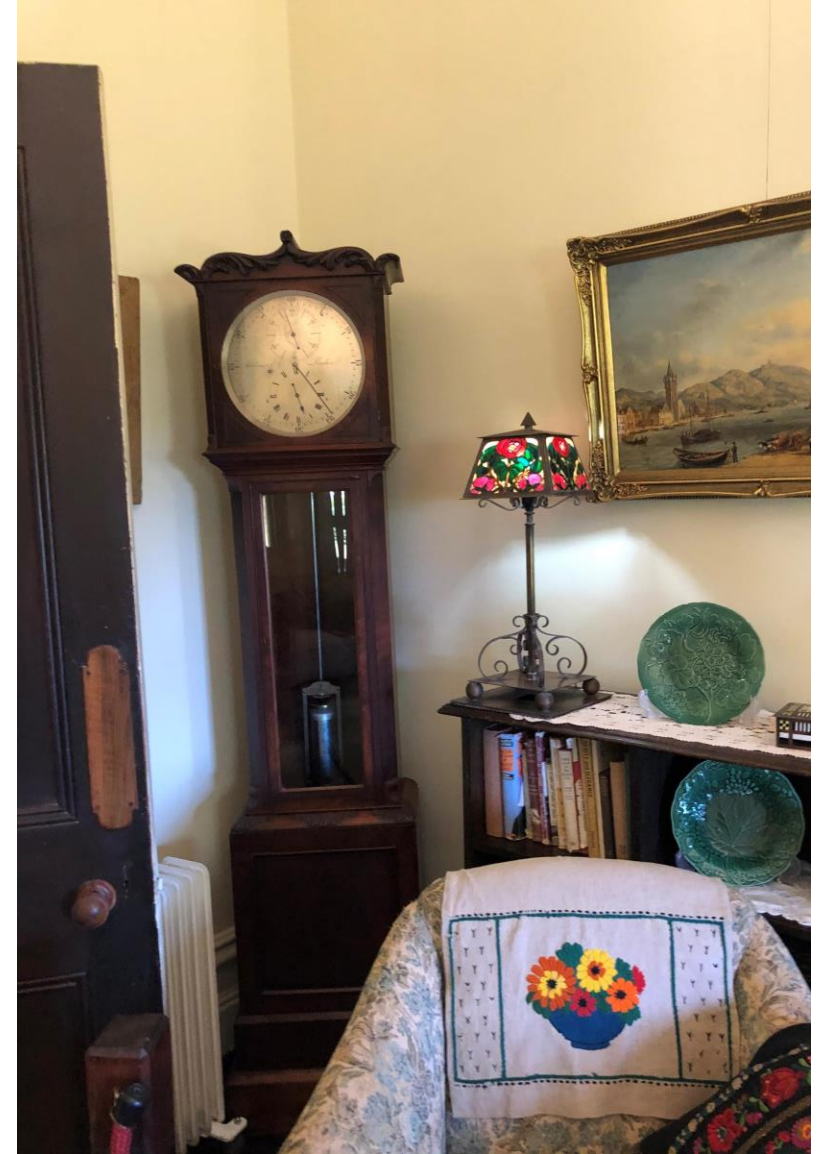
Greeting and entry to house



- We will be greeted by our Tour Guides.
- They will welcome us to Buda and tell us about the house and the family who lived there.
- We will go through the house in small groups so that we can all see and hear.
- The house is cold inside in winter, so I will wear my coat.
- If I feel uncomfortable or scared at any time, I will tell my teacher.

Visiting inside the house

- There are rooms where the family slept, ate, spent their leisure time and where they entertained.
- I will walk (not run) around, with my group and listen to what our guide tells us about what life was like in the olden days.
- I will keep my hands to myself and not touch anything.
- I will use my inside voice.
- If I have a question, I just need to raise my hand.





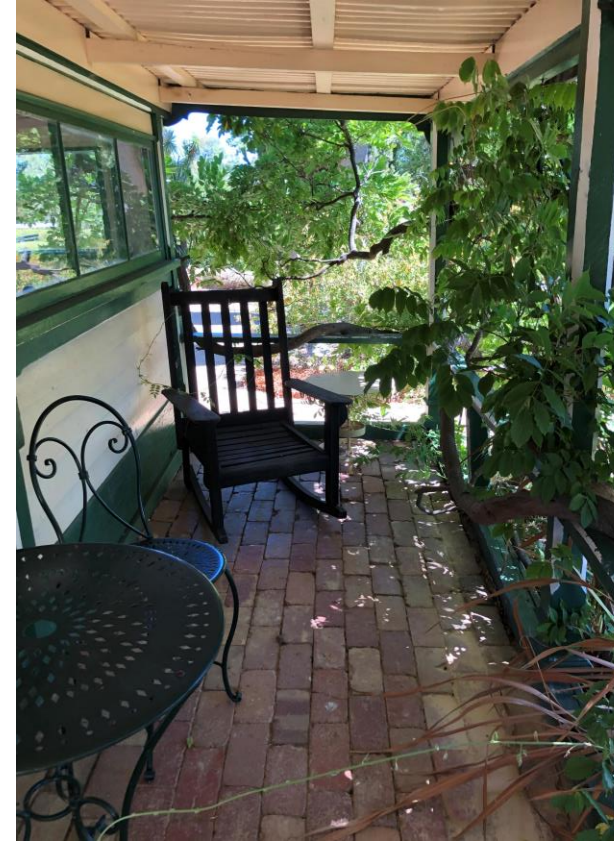
Snack or lunch time

- The guides will show us where to put our bags and where we will have our snack or lunch break.
- I will be able to hear the birds in the aviary if we sit in the paved area.
- I will put my rubbish back in my bag when I am finished eating.

Toilets



- The guides will show us where the toilets are.
- I must ask a teacher before going to the toilet.
- I might have to wait if someone is already in the toilet.
- There are toilets with old fashioned flush pulls!
- I will need to hold down the handle till it finishes flushing. If I need help, I can just ask.
- There is soap, a tap and paper towel just outside the toilet for washing my hands.



Exploring the gardens

- We will explore the garden; it is quite large with many paths.
- It might be sunny, or it might be raining.
- I will wear my hat for sun protection, my shoes, and a coat if its cold.
- I will keep to the paths. I will listen to any instructions.

Leaving

- When it is time to leave, I will take my bag and my rubbish with me.
- I will listen to my teacher and walk back up to the bus or to school the same way we got here.

Thanks for visiting!



BUDA

Historic HOME & GARDEN

